

All for accurate experimental results.

CLEA
CATALOG 2 Contents

■List of items

- ・Experimental Equipments
- ・Control Equipments
- ・Disinfectants

CLEA Japan has been participating in the planning to build the facilities of animal experiments for many research institutes and companies. After completion of the facilities, we further provide all kind of consulting services for the facility control and management, and the products, that are introduced in this brochure, such as experimental and control equipment and consumable supplies and materials, in addition to experimental animals and animal diets. We are proud to offer you all of these software and hardware that you need to operate your facilities with highest efficiency.

CLEA
JAPAN

	IT-MOUSE IT-MOUSE (アイティーマウス)	2-3
	Monkey Chair モンキーチェアー	2-5
	Operating Tables, Holders 手術台・固定器	2-6
	Dissecting-Operating Tools, etc. 解剖手術器具・その他	2-10
	Nets, Gloves, etc. 動物捕獲網・手袋・その他	2-12
	Sterilization Boxes, Working Table, Carts 滅菌箱・作業台・運搬車	2-13
	Balances 天秤	2-15
	Laboratory Tables, Storage Cabinets, Sinks 実験台・薬品棚・シンク	2-16
	Motion Recorders 運動量測定機器	2-17
	Respirators 動物人工呼吸器	2-18
	Beddings, etc. 床敷・その他	2-19
	Atomizers, Disinfectors 噴霧器・消毒機	2-21
	Cleansing Agents, Disinfectants 洗浄・消毒剤	2-23
	Laboratory wears, etc. 実験衣・その他	2-28
	Cleaners 掃除機	2-30

※Dimensions and designs are subject to change without notice due to continuous improvements.

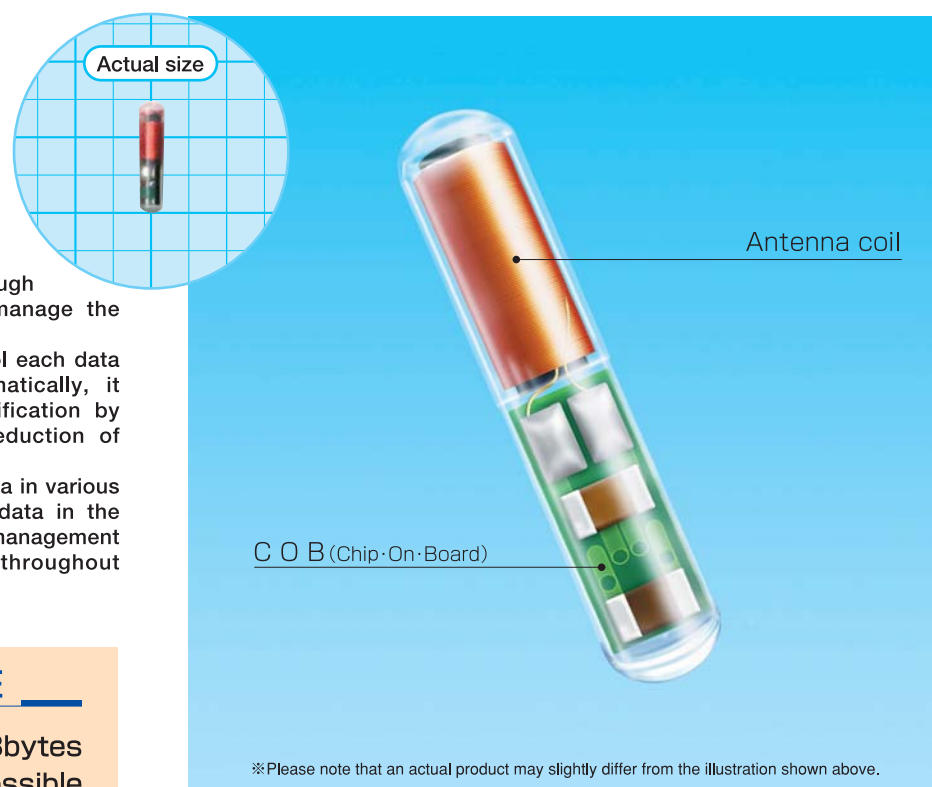
CL-4582 IT-MOUSE

Application/
Individual Animal Traceable Management System

IT-MOUSE is an individual distributed management system which consists of a tag inserted into mouse body and Reader/Writer device. The system makes reading, writing, adding and updating of the data possible through wireless communication and can manage the traceability of laboratory animals. As the system can match and control each data and each individual animal automatically, it prevents data missing or misidentification by human error and contributes to reduction of management cost. And this system allows the use of data in various applications by putting the stored data in the database, and brings innovation to management and practical use of data throughout experimental period.

Features of IT-MOUSE

- Memory size ——— 128bytes
- Memory rewriting ——— Possible
- Effective transmission range ——— 0~20mm

**IT-MOUSE Tag**

Dimensions / 3.4φ×14.3mm
Structure / Antenna coil, COB, Outer case (Polypropylene)



CL-4587
IT-MOUSE
tag insertion device



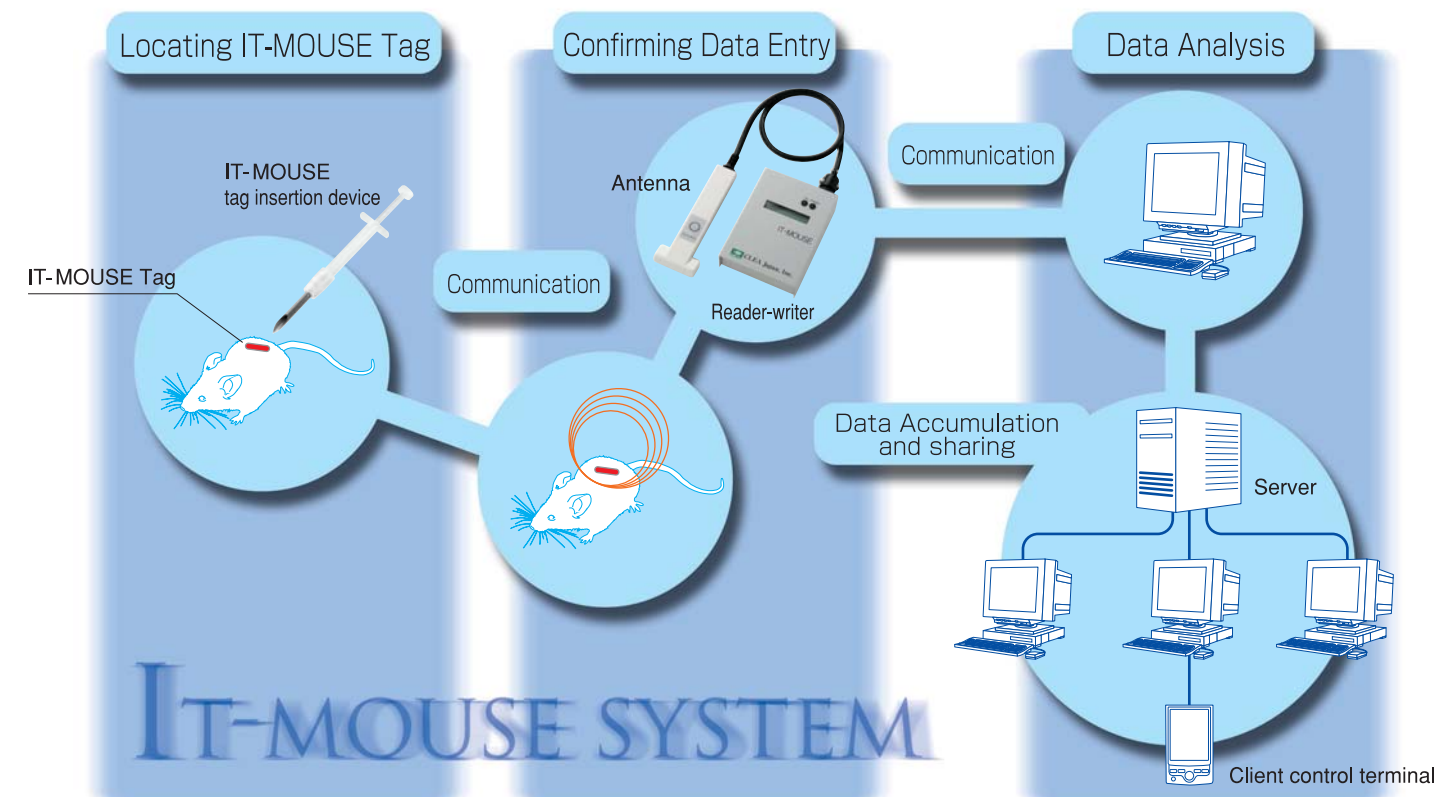
CL-4586
Antenna (Handheld type)



CL-4585
Reader-writer



Photo : Reader-writer with antenna

Overview of management system**Various advantage in introduction of IT-MOUSE system****Management of individual mouse and cage**

- Reducing human error in management
- Individual distributed management of data
- Reducing management workload and the number of processes
- Saving management cost
- Easy restoration in the event of a natural disaster

Database construction

- Automatic creation of various documents
- Simplifying data analysis

Flexible data management by system control software

System control software can be customized according to your needs

Breeding Room**Management of individual mouse**

- Reading data from individual mouse
- Writing data to individual mouse / ID, Gender, Genotype, Parent ID, Birth date, Assigned caretaker, and etc.
- Managing condition of individual mouse / Pregnancy status, Delivery date, Number of births

Laboratory**Server**

- Accumulating and managing individual and other relating data

Server and Interface

- Uploading collected data to server
- Downloading individual data from server
- Downloading software

Operation on client side

- Data entry by typing
 - Data collection Data list by cage
 - Data search Pedigree by cage
 - Print out Data list by individual
 - Pedigree by individual
 - Data processing and analysis by software such as Excel
 - Maintenance of master information

※Different data format suiting to your system is available upon request with extra charge. Please ask our customer service.

Features of Monkey Chair

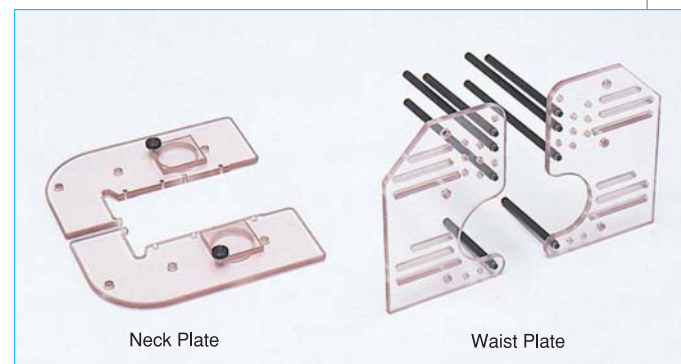
- This innovative system, which has developed in the U.S., provides comfortable working condition for both animals and experimentalists by gently handling animals.
- Easy to hold animal in a correct position to avoid stress on animal and this ensures to eliminate undesirable effects on your experiment.
- Waist plate has a leg splitter that can stretch monkey's legs apart and keep the lower body out of reach by its hands.
- Easy to assemble with an attached mini-spanner.



**CL-4535
Monkey Chair**
Dimensions / 800×700×1000mm
Material / Alloy

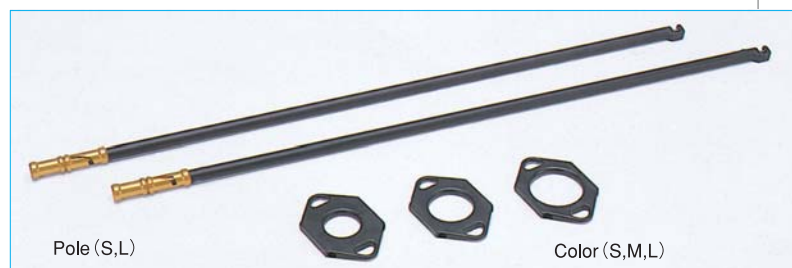


Water Bottle



Neck Plate

Waist Plate



Pole (S,L)

Color (S,M,L)

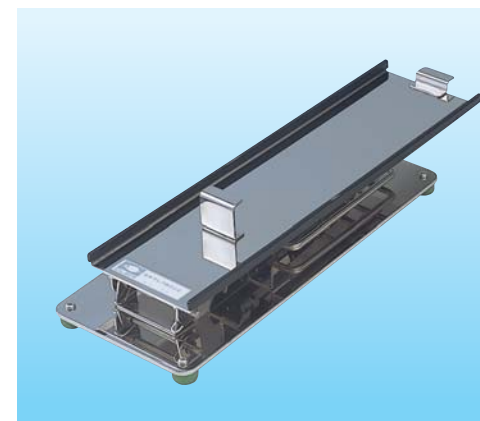
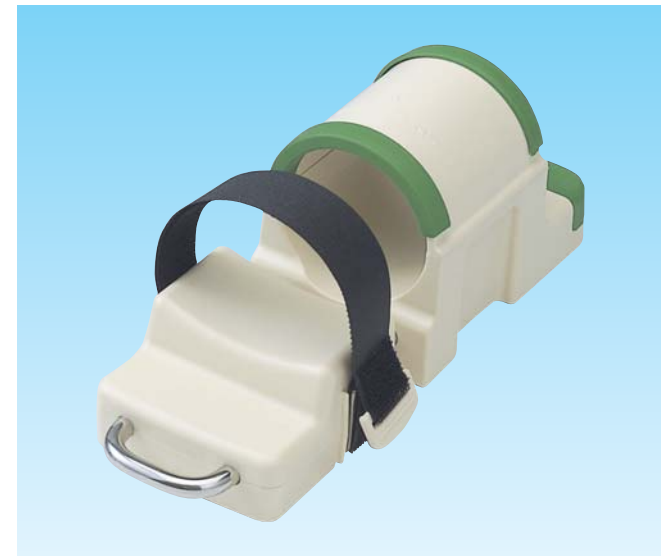
CL-4532 Marmoset Holder

Dimensions / 88×263×93mm
Material / Main frame: PP, Guard: Elastomer
Frame: Stainless steel, Belt: Nylon
Weight / 600g
Replacement Parts / Guards: three, Belt: one

Features of Marmoset Holder

Waist belt is the only holding part of animal unlike other conventional holders, so that stress on animal is significantly reduced.

- The area which touches animal's mouth is covered with soft protection material.
- Slide table can be adjusted according to the size of animal.
- Adjustable belt gently holds animal's waist.
- Compact size and easy to carry.



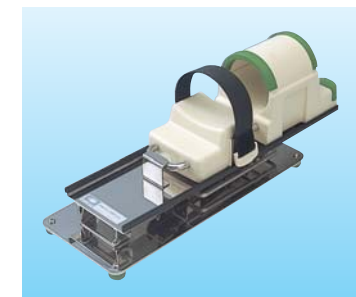
CL-4533 Holding Stand

Dimensions / 120×368×68 (maximum 355) mm
Material / Main frame: Stainless steel
Pla-part: Elastomer
Weight / 1.4kg

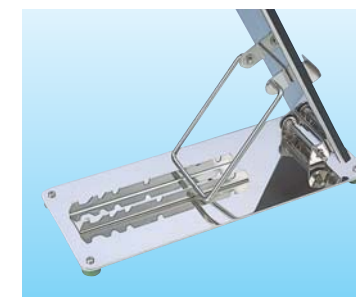
Features of Holding Stand

It stably holds an animal in standby position on the holder during operation.

- Multi-experiments can be performed at the same time by standing the holders side-by-side.
- Angle of the stand can be adjustable in six levels to choose most stable position.
- Heavy stainless steel is used to ensure standing stability.
- It can be folded up for easy carrying.



•Placing a holder on a holding stand



•Angle-adjustable in six levels





CL-4511
Versatile operating table
for medium size animals

CL-4512
Versatile operating table
for medium size animals
(with two tool trays)

Dimensions/630×900×730~930mm
Material/stainless steel

Simple Operating Table for medium size animals

It is designed for operation and dissection of medium size animals. Control handles conveniently located in the head side allow operator to control the table with ease.
(CL4512 with two convenient tool trays for operation and dissection reduces operator's fatigue,)



CL-4513
Simple Operating Table
for medium size animals

Dimensions/665×995×800mm
Material/Stainless steel



CL-4510
T-shaped
Beagle Holder

Outside Dimensions/
Large:200W×300L×110Hmm
Medium:180W×280L×110Hmm
Small:160W×260L×100Hmm
Applicable body weight/
Large:10~18kg
Medium:7~15kg
Small:5~10kg
Main frame material/Aluminum, alumite-coating
※Applicable weight is rough estimation intended for beagles.



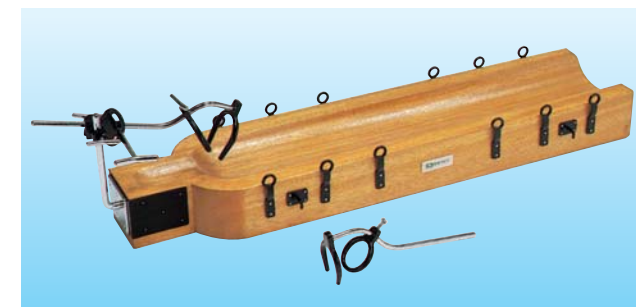
CL-4515
Holding and Dissecting Table
for dogs

Dimensions/400×1,200×130mm
Materials/Stainless steel, brass
Accessory/One large and one small Palmer-type neck fixing brackets



CL-4516
Thermal Holding and Operating Table
for dogs

Dimensions/400×1,200×130mm
Materials/Stainless steel, brass
AC Power Supply/100V 250W Heater
Accessory/One large and one small Palmer-type neck fixing brackets



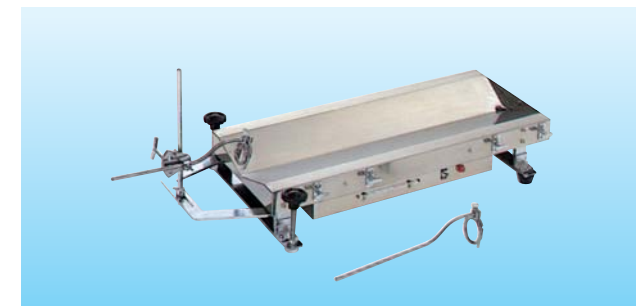
CL-4517
Holding Table for dogs

Dimensions/270×1,200×120mm
Materials/Wood, Steel
Accessory/One large and one small neck fixing brackets



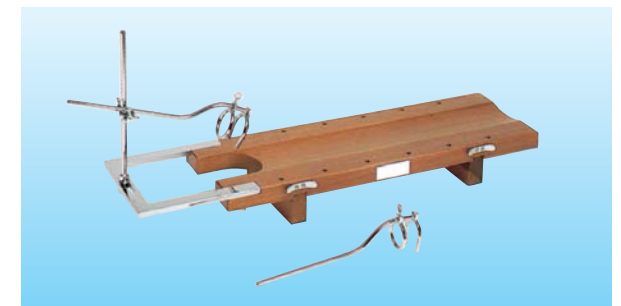
CL-4518
Dissection table for cats and rabbits

Dimensions/300×850×110mm
Materials/Stainless steel, brass
Accessory/One large and one small neck fixing brackets



CL-4519
Thermal Operating Table
for cats and rabbits

Dimensions/300×850×110mm
Materials/Stainless steel, brass
AC Power Supply/100V 150W Heater
Accessory/One large and one small neck fixing brackets



CL-4520
Kitajima-type Rabbit Holder

Dimensions/220×800×80mm
Materials/Wood, Steel
Accessory/One large and one small neck fixing brackets



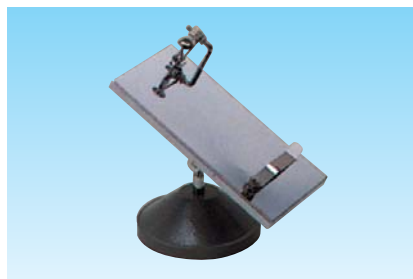
CL-4521 Oshida-type Rabbit Holder

Dimensions / Small: 150×400×120mm
Medium: 170×450×140mm
Large: 190×500×150mm
Material / Brass



CL-4524 Modified Koyama-type Rat Holder

Dimensions / 100×240×170mm
Material / Brass
Accessories / One collar clip, One large, one medium,
and one small neck fixing brackets



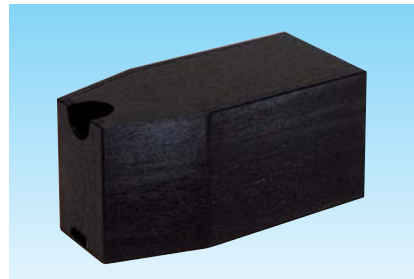
CL-4526 Kitazato-type Mouse Holder

Dimensions / 85×165×95mm
Material / Brass



CL-4529 Dissecting Table

Dimensions / 240×300mm
Materials / Wood and cork boarding



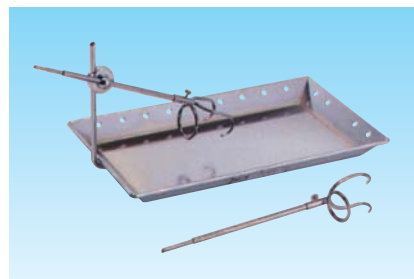
CL-4522 Blood Collecting Box for rabbits (with sliding door)

Dimensions / 205×430×200mm
Material / Wood
※ Hinged door is also available.



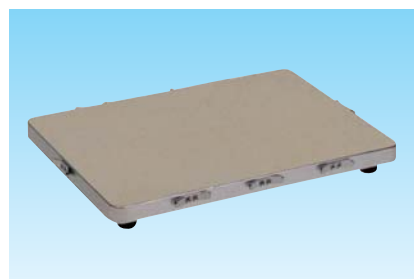
CL-4525 Mouse Holder

Dimensions / 85×165×95mm
Material / Brass
Accessories / One large, one medium,
and one small holding brackets



CL-4527 Shiga-type Guinea Pig Holder

Dimensions / 200×300×25mm
Material / Brass
Accessories / One large and one small neck fixing brackets



CL-4530 Operating Plate for holding mice and rats

Dimensions / 300×400mm
Material / Decorative finish



CL-4523 Holder with stocks for rabbits

Material / Wood

Model Number	Dimensions (mm)
CL-4523-1	For one rabbit / 220×400×250
CL-4523-2	For two rabbits / 395×400×250
CL-4523-3	For three rabbits / 570×400×250
CL-4523-5	For five rabbits / 920×400×250



CL-4528-1 Animal Pocket for Rats

Dimensions / 153×315mm
Materials / OP, CP
50 sheets / bag, 2 bags / pack.

CL-4528-2 Animal Pocket for Mice

Dimensions / 103×190mm
Materials / OP, CP
50 sheets / bag, 2 bags / pack.



CL-4531 Rabbit Holder

Dimensions / 205×500×180mm
Material / Urethane foam



CL-4550 37-items Dissecting Tool Set for small and medium size animals

Charriere bone saw	1	Surgical scissors		Tapered tweezers (130mm)	2
Plastic hammer	1	Straight apex cartilaginis arytenoideae edge	1	Tapered tweezers (110mm)	2
Board chisel (120mm)	1	Settlement apex cartilaginis arytenoideae edge	2	Tapered tweezers for dental surgery	1
Double-head curette No.1	1	Dual blunt edges	1	Artery forceps	2
Liston bone cutting forceps (170mm)	1	Ophthalmic scissors-straight	2	Scalpel chondrotome-cartilage knife	1
Bone cutting forceps (240mm)	1	Wire cutting scissors-straight	1	Scalpel-apex cartilaginis arytenoideae edge knife	1
Kocher double hook clamp	2	Kocher clump forceps (140mm)	2	Spare blade holder No.3, No.4	1
Aneurysm needle, Left and Right	1	Kocher clump forceps (110mm)	2	Spare blade for scalpel No.23, No.14	1
Mathieu needle holder (160mm)	1	Bougie medium and small	1		



CL-4551 18-items Operating Tool Set for small animals

Surgical scissors		Mathieu needle holder (160mm)	1
Straight apex cartilaginis arytenoideae edge	1	Tapered tweezers (130mm)	1
Settlement apex cartilaginis arytenoideae edge	2	Tapered tweezers (110mm)	1
Dual blunt edges	1	Tapered tweezers for dental surgery	1
Ophthalmic scissors-straight	2	Double-head curette No.1	1
Wire cutting scissors-straight	1	Probe-small	2
Spare blade holder No.3, No.4	1		
Spare blade for scalpel No.23, No.14	1		



CL-4552 Five-items Simple Operating Tool Set

Surgical scissors	
Straight apex cartilaginis arytenoideae edge	1
Ophthalmic scissors-straight	1
Scalpel scissors	1
Tapered tweezers (130mm)	1
Tapered tweezers (110mm)	1



CL-4561-2 Hand-wash Stand Type-2 (for two basins)

Dimensions / 680×330×750mm
Material / Stainless steel, with wheels
Basin / 320φ, with two basins



CL-4564 Hand Cleaner

Dimensions / 153×297×173mm
Two-way power supply either from
100V AC or DC battery

CL-4561-1 Hand-wash Stand Type-1 (for one basin)

Dimensions / 330×330×750mm
Material / Stainless steel, with wheels
Basin / 320φ, with one basin





CL-4562
Operating Light
(Ceiling Type)

■ Specifications of Operating Light (Ceiling Type)

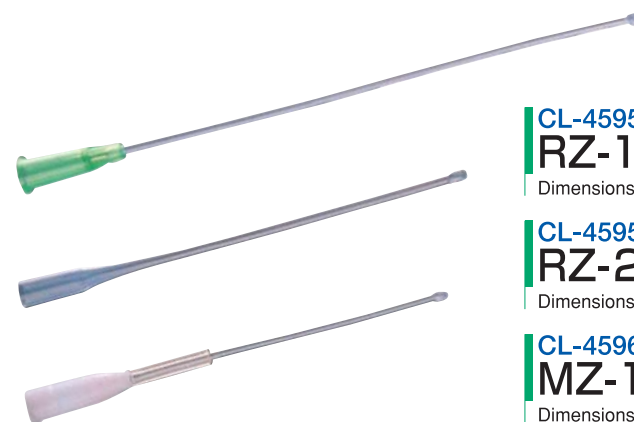
Bulb	illumination intensity (at one meter) (lux)	Adjustment for illumination intensity	Adjustment for focus (cm)	Power Consumption (VA)	Bulb life (hr)	Color temperature	Optical field (at one meter) (cm)
#37 24V-35W Krypton-halogen bulb Open type Cold mirror reflection	55,000 25,000	4-level Switch	60 120	190	About 2,000	4,250° K ±250°	12 18
#HCR-150-3S 21-layer coating 24V-40W Shield Beam High cool ray	53,000 25,000			220		4,000° K ±250°	

※Please specify bulb type.

Disposable Flexible Oral Sonde

Features

- It is made of flexible Teflon, therefore it can be smoothly inserted and misadministration of drugs into the trachea can be avoided.
- A rounded tip ensures that damage to the wall of the esophagus is prevented.
- It is disposable and can be used as it is since it has been already sterilized by EO gas.



CL-4595-1
RZ-1 for rats

Dimensions/1.6φ×110mm

CL-4595-2
RZ-2 for rats

Dimensions/1.6φ×85mm

CL-4596
MZ-1 for mice

Dimensions/1.2φ×80mm



CL-4570
Cancer cell transplantation needle

Dimensions/3.5φ×9.5mm

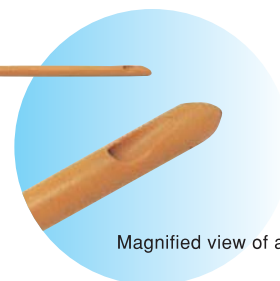
Material/Unit/one needle or five needles in one package

※Cancer cell transplantation needle for nude mouse.



CL-4588
Nelaton Catheter

Dimensions/2.5~8.5φ×330mm



Magnified view of a tip



CL-4594
Sonde K-type (for rabbits)

Dimensions/6.5φ×530mm



CL-4593
Oral Syringe

Volume/1ml



CL-4536-1
Leather Gloves
for Animal Capture

One size fits all

CL-4536-2
Stainless Gloves

For left or right hand, (S,M,L)

CL-4537-1
Animal capture net No.1

CL-4537-2
Animal capture net No.2



CL-4558
Ear Punch
for small animals

Dimensions/120mm
Punch diameter/φ1.5mm



CL-4538
Face protector



CL-4556
Electric Clipper for Small Animals
(AC Type)

Dimensions/188×50×50mm

AC Power Supply/100V

Weight/550g (including blade)

Accessory/Motor oil, grease, replacement blade (one kind)



Replacement blade

Replacement Blade	Thickness (mm)	Animal
#40	0.5	Mouse,Rat
#30	1	Mouse,Rat
#15	1.5	Rat,Rabbit,Dog
#10	2	Rabbit,Dog
#7	4	Dog



CL-4020 Sterilization containers

Features

- High performance polymer product with lightweight, superior heat resistance and shock resistance. Identify contents through locked clear lid.
- Maintenance free stainless steel filter.
- Stored equipments can be preserved for long term after sterilization. (6 months)

■ Sterilization containers

Model No.	CL-4020	CL-4021	CL-4022
Dimensions	580×294×150mm	455×294×150mm	285×294×150mm
Weights	2.5kg	2.2kg	1.6kg
Materials	Body and lid: Polyphenylsulfone, Filter: Stainless steel (SUS316L)		

Safety	Safe preservation period: 6 months.
	Bacterial filtration efficiency of filter: 97.4%
Effectiveness of sterilization	Autoclave and gas sterilization are available.

■ Baskets

Model No.	CL-4020-1	CL-4021-1	CL-4022-1
Dimensions	540×255×50mm	415×255×50mm	245×255×50mm
Model No.	CL-4020-2	CL-4021-2	CL-4022-2
Dimensions	540×255×75mm	415×255×75mm	245×255×75mm



CL-4547-1 Sterilization Box (Type A)
Dimensions / 400×300×300mm
Material / Stainless steel
Application / Bedding sterilization



CL-4547-2 Sterilization Box (Type B)
Dimensions / 400×300×300mm
Material / Stainless steel
Application / Diet sterilization



CL-4548 Cart for Sterilization Box
Dimensions / 460×360×905mm
Material / Stainless steel
Components / One sterilization box and one cart



CL-4025 Diet Container
Dimensions / 500×410×970mm
Material / Stainless steel
Components / Two diet boxes and one cart



CL-4601 Operating Cart
Dimensions / 610×440×810mm
Material / Stainless steel



CL-4541 Working Table
Dimensions / 900×600×800mm
Materials / Stainless steel, SUS430



CL-4542 Rolling Stepladder
Dimensions / 550×600×650mm
Material / Steel



CL-4543-1 Pushcart
Dimensions / 700×450×800mm
Material / Steel
Maximum Load / 100kg



CL-4543-2 Pushcart (Type S)
Dimensions / 900×600×850mm
Material / Steel
Maximum Load / 300kg



CL-4543-5 Container Cart
Dimensions / 900×600×855mm
Maximum Load / 300kg



CL-4543-6 Cart Type D
Dimensions / (Shelf 610+bag 460) × 610×1050mm
Diameter of caster / 100mm rubber wheel



CL-4543-7 Cart



CL-4543-8 Working Cart

■ Specification of CL-4543-7 and CL-4543-8

Model Number	Type	Dimensions (mm)			Diameter of caster
		W	D	H	
CL-4543-7	BKA-S	760	460	950	100mm Rubber wheel
	BKB-S	910			
	BKC-S	1,070	610		
	BKD-S	760			
	BKE-S	910			
	BKF-S	1,070			
CL-4543-8	K0-S	610	460	860	100mm Rubber wheel
	K1-S	760			
	K2-S	910	610		
	K3-S	760			
	K5-S	910			

※ Two free casters and two casters with stoppers



CL-4501 Water- and Dust-proof Digital Balance

Features

- Washable water- and dust-proof balance
- Fully sanitary since main body and measuring plate are made of stainless steel.
- Can be set to zero with empty container on the scale
- Easy-to-read large LCD display



■Specifications (SK-WP)

Type	SK-1000WP	SK-2000WP	SK-5000WP	SK-10KWP	SK-20KWP
Weighing Capacity	1000g	2000g	5000g	10kg	20kg
Minimum Scale	0.5g	1g	2g	0.005kg(5g)	0.01kg(10g)
Operating Temperature and Humidity	-5°C to 35°C 85% and below (no condensation)				
Display	LCD display Displaying character height 25mm				
Measuring Plate Dimensions	232 (W) × 192 (D) mm				
Main body Dimensions	244 (W) × 232 (D) × 137 (H) mm				
Power Supply	Six size D manganese batteries, six size D alkaline batteries, or AC adapter				
Battery life	Manganese battery: about 600 hours (20°C) Alkaline battery: about 200 hours (20°C)				
Weight	About 2.9kg				



CL-4502 Digital Balance

Features

- Easy to use digital scale
- Plastic body is drip-proof.
- Can be set to zero with empty container on the scale
- Easy-to-read large LCD display.

・SL-D Series have double-sided displays



Rear face

■Specifications (SH/SL/SL-D)

Type	SH-1000 SL-1000D	SH-2000 SL-2000D	SH-5000 SL-5000D	SL-10K SL-10KD	SL-20K SL-20KD	SL-30K SL-30KD
Weighing Capacity	1000g	2000g	5000g	10kg	20kg	30kg
Minimum Scale	0.5g	1g	2g	0.005kg(5g)	0.01kg(10g)	0.02kg(20g)
Operating Temperature and Humidity	-5°C to 35°C 85% and below (no condensation)					
Display	LCD display Displaying character height 25mm (SL-D series have Double-sided displays)					
Measuring Plate Dimensions	232 (W) × 190 (D) mm					
Main body Dimensions	244 (W) × 232 (D) × 137 (H) mm					
Power Supply	Six size D manganese batteries, six size D alkaline batteries, or AC adapter					
Battery life	Manganese battery: about 600 hours (20°C) Alkaline battery: about 200 hours (20°C)					
Weight	About 1.5kg					

○We also offer special scales, that can hold average weight for accurate weight measurement, for highly active animals.
Please contact our customer service.

CL-4651

Large Center Laboratory table

Top Board/Nonasbestos synthetic resin
Main Body/Plywood, Particle Board 18t
Sink/Stainless steel (SUS-304) sink ×1
Stainless steel (SUS-304) pot ×2
Water faucet/Three-faucet type×1
One-faucet type ×4
Gas valve/Optional valve×4
Electrical outlet/
AC100V, 15A grounded two outlets×4
Chemical Storage Cabinet/
With glass doors and safety pipes
Lighting/20W light×4



CL-4658

Chemical and Equipment Storage Cabinet

Main Body/Plywood, Particle Board 18t
Plastic plywood lamination
Top Board/Nonasbestos synthetic resin
Glass Sliding Door/Transparent 5 mm thick glass
Stainless steel sliding door rail,
Molded Polyvinyl Chloride Sliding Door
With sliding lock and safety pipe



CL-4655

Side Laboratory Table

Top Board/Nonasbestos synthetic resin
Main Body/Plywood, Particle Board 18t



CL-4656

Side Laboratory Table

Top Board/Nonasbestos synthetic resin
Main Body/Plywood, Particle Board 18t



CL-4650

Sink Unit

Main Body/Plastic plywood lamination 18t
Sink Surface/Stainless steel (SUS-304)
Depth 200mm, with traps
Water faucet/Three-faucet type×1
Two-faucet type×1
※Lead or Polyvinyl Chloride lamination is also available for sink surface in addition to various types of stainless steels.

CL-4005 Sink



■Specifications

Model Number	Model Name	Dimensions (mm)		
		W	D	H
CL-4650 ⁻¹ ₋₂	Sink Unit	1,500	750	800
		1,800		
CL-4651 ⁻¹ ₋₂ ₋₃	Large Center Laboratory Table	2,400	1,500	
		3,000		
		3,600		
CL-4655 ⁻¹ ₋₂	Side Laboratory Table (Flat Top Type)	1,500		
		1,800		
CL-4656 ⁻¹ ₋₂ ₋₃	Side Laboratory Table (Flat Top Type)	1,800		
		2,400		
		3,000		
CL-4658 ⁻¹ ₋₂ ₋₃ ₋₄	Chemical and Equipment Storage Cabinet	900	400／500	1,800
		1,200		
		1,500		
		1,800		

■Specifications Made of stainless steel

Model Number	Model Name	Dimensions (mm)			Depth
		W	D	H	
CL-4001	Sink	1,200	750	800	300
CL-4002					600
CL-4003		1,500			300
CL-4004					600
CL-4005		1,800			300
CL-4006					600
CL-4007		2,100			300
CL-4008					600

CL-4583

Treadmill

Forced exercise motion recorder

For both mice and rats

■ Specifications

Dimensions of Main Body	W660×D1,020×H930mm
Lane size	W440×D1,020×H930mm
Running Speed	5~70m/min
Pitch	0~30°degrees (adjustable)
Power Supply	100V-1A (Maximum)



CL-4578

Rotarod for Mice and Rats

Rotarod treadmill to measure endurance performance of mice and rats. Rotors are made of hard rubber to prevent animals from sliding down by themselves and enduring time can be accurately measured.

■ Specifications of rotarod

Dimensions of Main Body	700×350×525mm		
Rod (Hard Rubber)	φ30 (For mice)	φ70 (For rats)	φ90 (For rats)
Revolution Speed	Digital Display, Adjustable		
Power Supply	100V 3A		



CL-4579-1

Activity Wheel for Rats

Unit:mm								
Wheel			Living Cage			Dimensions of Main Body		
φ	W	D	W	D	H	W	D	H
370	100	140	400	165	270	410	420	

CL-4579-2

Activity Wheel for Mice

Unit:mm								
Wheel			Living Cage			Dimensions of Main Body		
φ	W	D	W	D	H	W	D	H
200	50	90	220	90	180	230	250	

This is a device to measure the amount of voluntary running of animals on various kinds of testing, such as, testing on central nervous system and drug effects. Measurement is done by a counter in default setting. The counter is replaceable with micro-switch or photocell and long-hour experimental data can be recorded by using CL-4580 universal digital printer (for micro-switch only).



CL-4580

Universal Digital Printer (Six channels)

Dimensions/430×350×160mm
Power Supply/100V6A

Various kinds of experimental data can be recorded in printing. In Activity Wheel, data can be recorded in printing by replacing a counter with a micro-switch.



CL-4573

Respirator for dogs and pigs
(Adjustable inhale-exhale ratio type)

Enough oxygen supply is always assured by this positive pressure respirator.

Physiologically natural respiration can be achieved for dogs, cats, and rabbits model, since the Inhale-exhale ratio is adjustable



CL-4577-1/-2

Respirator for guinea pigs, rats, and mice
(Fixed inhale-exhale (IE) ratio)

■ Specifications for Animal Respirators

Model Number	Model name	Type	Dimensions (mm)			Weight kg	Range of Adjustable Respiratory Volume cc	Range of Adjustable Respiratory Rate Number/min	Range of Adjustable IE Ratio %
			W	D	H				
CL-4573	Respirator for dogs and pigs	Adjustable IE ratio	560	310	320	23	50~750	5~50	30~70
CL-4574		Fixed IE ratio							—
CL-4575	Respirator for cats and rabbits	Adjustable IE ratio	560	310	320	22	10~100	10~90	30~70
CL-4576		Fixed IE ratio							—
CL-4577-1	Respirator for guinea pigs and rats	Fixed IE ratio	320	275	270	13	0~30 0~10	20~150	—
CL-4577-2	Respirator for mice	Fixed IE ratio	320	275	270	13	0~3	20~150	—

※Electrical motor uses 100V DC gear motor.

※Dual cylinder/piston type, that can treat two animals simultaneously, is also available.

Heavy metal and chemical contaminants are monitored.(non-periodic.)
Irradiated bedding is also available.

CL-4130 Recycled Paper Bedding PC

Packaging/Pe bag
Type/Pellet (φ5mm)
Quantity/10kg

Features of PC

- Superior odor control for ammonia
- Superior absorbency
- Easy to clean



Bedding for Experimental Animals
By TAPVEI

CL-4169 Aspen Chips

Features of Aspen Chips

- Directly imported from nature-rich Finland
- Using Aspen wood with extremely little volatile component
- Dust is highly eliminated
- Strict quality control ensures high quality



CL-4140
Roll Paper
Dimensions/420mm×50m, 570mm×50m
Autoclavable



CL-4161
Clean Chips
Quantity/7kg
Product of USA Fir Tree



CL-4420
Cotton bags for
sterilizing animal feed
Material/Cotton
100 bags per container

For better environment for experimental animals

CL-4162-1 Clea House (M)

Dimensions/115×170×50mm
Material/Recycled Paper
250pieces per box

CL-4162-2 Clea House (S)

Dimensions/85×115×30mm
Material/Recycled Paper
250pieces per box



By TAPVEI Enrichment for Experimental Animals

- 1 Wooden wool
- 2 Mouse Cube
Dimensions/60×60×60mm
- 3 Mouse Stairs
- 4 Mouse Tunnel
Dimensions/100×45×45mm
- 5 Mouse Labyrinth
Dimensions/150×55×10mm
- 6 Mouse House
Dimensions/70×110×110mm
- 7 Double Bricks
Dimensions/100×60×25mm
- 8 Rabbit Bricks
Dimensions/65×60×25mm
- 9 Mouse Arcade
Dimensions/95×105×200mm
- 10 Corner
Dimensions/90×115×80mm
Board thickness/15mm
- 11 Double corners
Dimensions/200×200×90mm
Board thickness/15mm
- 12 Blocks
Dimensions/S:50×10×10mm
M:100×20×20mm
L:200×40×40mm
- 13 Tube S·L
Dimensions/S:100×75×75mm
L:200×110×110mm
Usage/S: for mouse L: for rat



BEDDING & OTHERS



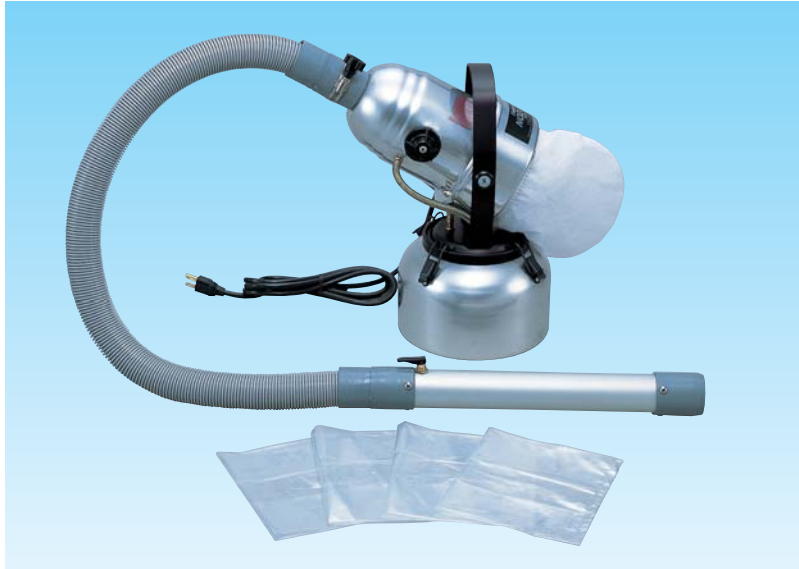
CL-4110
Jet Fog Type I
Tank Capacity / about 3.8 ℓ
Materials / Aluminum, Stainless Steel
Power Supply / AC 100V
Applications / Aerosol spray of insecticide, air cleaning agent, deodorant, and disinfectant
● Spray amount is not adjustable.



CL-4112
Jet Fog Type II
Tank Capacity / about 3.8 ℓ
Materials / Aluminum, Stainless Steel
Power Supply / AC 100V
Applications / Aerosol spray of insecticide, air cleaning agent, deodorant, and disinfectant
● Spray amount is adjustable in four levels.



CL-4111
Turntable
Power Supply / AC 100V
Application / For Jet Fog



CL-4114
Nozzle Jet
Dimensions /
Main Body: 32cm (W) × 29cm (D) × 39cm (H)
Hose Length: 91cm, Nozzle: 41cm
Weight / Main Body 5.4kg, Hose & Nozzle 1.8kg
Tank Capacity / about 3.8 ℓ

Spray volume 0~300ml

Voltage AC 100V for general household

Frequency 50・60 Hz
(Can be used nationwide)

Features of Nozzle Jet

- Lightweight and portability enable you to use it on carrying, as well as stationary.
- Easy to operate with a switch on a nozzle
- The spray volume is easily adjustable for chemical solution
- Ideal for pinpoint intensive spraying
- Safe and economical for indoor use since solution is localized and not spread to the air.

CL-4115
Shoulder handing Atomizer Type B
Weight / 2.1kg Capacity / 5.0 ℓ
With a variable nozzle for four different types of spraying
Lightweight and durable stainless steel body



CL-4104
HI-CLEAN II
Purpose of use /
Weak acid water generator for washing and disinfection.

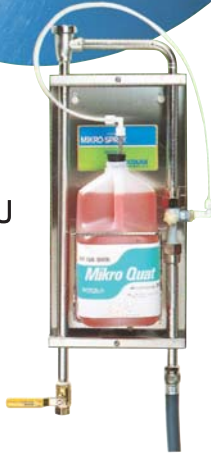
The feature of HI-CLEAN II

- Generate weak acid water with high bactericidal activity based on the hypochlorous acid
- Continuous generation of stable week acid water
- The history of pH is manageable
- It operates automatically when the faucet is opened

■ Outline		
Model number	CL-4104-1	CL-4104-2
Type	TAK-900CL	TAK-1800CL
Dimensions	700×600×1070mm (Casters are included)	700×600×1200mm (Adjustment bolts are included)
Weight	About 100kg	About 100kg
Rated voltage	AC100V 1.1A 50/60Hz	
Amount of water generation	900-liters/h	1800-liters/h



CL-4103
Micro Spray
Wall-mounting Type J
Usage / Cleansing, Disinfection



CL-4116
Porter Washer Type P

■ Specifications for Porter Washer Type P	
Discharge Rate	10 ℓ / min
Discharge pressure	Wash (with detergent) 25kg/cm ³ Rinse (with hot water) 50kg/cm ³
Operating Temperature	80℃ (Max)
Motor	1.5hp 100/200V Totally enclosed fan cooled type
Hose	12m Withstanding pressure 80kg/cm ³
Heated water inlet hose	with 3/4 (1in) strainer
Detergent Container	3.8 ℓ Plastic
Dimensions	495×700×1,200mm

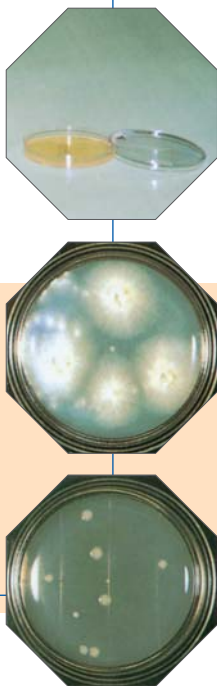




CL-4129
Exspor
Base (1gallon×2)
Activator (1gallon×2)



Examples of use



Exspor consists of base agent (Base) and active agent (Activator). When Activator is added to properly diluted Base, organic acid in Activator reacts with chlorite in Base to produce chlorous acid. The chlorous acid reacts with some ingredients in the cell wall or adventitia of microbes to produce chlorine compounds. Finally "chlorine dioxide" in the produced chlorine compounds shows disinfectant effect. When chlorine dioxide is consumed, this reaction keeps producing chlorine dioxide to ensure continuous disinfectant power. This is a distinguishing advantage of Exspor that intensive disinfectant effect is continuously activated when and where it is necessary.

Advantages of Exspor

- Superior disinfectant power of chlorine dioxide
- Extensive antibacterial spectrum
- High safety EPA certified

exspor

Disinfectant speed and power

	Exspor	Aldehyde	Hypochlorite**	Phenol	Quaternary ammonium salt
Bacteria	1-3 minutes *	10 minutes	Unknown	Unknown	effective only for Gram positive bacteria
Virus	1-3 minutes *	10 minutes	Unknown	effective only for lipophilicity virus	effective only for lipophilicity virus
Fungi	1-3 minutes *	10 minutes	Unknown	slowly effective	Ineffective
Tubercle bacillus	1-3 minutes *	45~90 minutes	Unknown	effective	Ineffective
Pseudomonas aeruginosa	1-3 minutes *	10~20 minutes	Unknown	effective	Ineffective
Spore bearing bacteria	six hours	for 10 hours	Ineffective	ineffective	Ineffective

* 1 minute for less than 24 hours and 3 minutes for less than 2 weeks after mixture.
** Easy to be deactivated by organic matter and disinfectant time can't be specified.

Disinfectant speed and power

	Exspor	Aldehyde	Hypochlorite**	Phenol	Quaternary ammonium salt
toxicity	No	High	Low	moderate/high	Low
	No	High	High	moderate	Low
mucomembranous irritation	Low	High	High	Low	moderate
caustic	Low	Low	High	Low	Low
pungent odor	Faint	High	High	High	Unknown
disposal restriction	No	Unknown	Unknown	Unknown	Unknown

** Easy to be deactivated by organic matter and disinfectant time can't be specified. (Cf. Data sheets for Exspor by Alcidé co.)



CL-3450
Silicon half-face mask



Caution: Exspor is highly safe agents but be sure to use gasmask, protective gloves, and protective goggles while sterilizing or disinfecting work. In addition, be sure to ventilate a room well.



CL-4120
Mikro Quat
(4 liters × 4 bottles)

This product is a nonionic agent, that mainly consists of quaternary ammonium salt (9% minimum), for cleansing, disinfectant, and deodorization.

Features of Mikro Quat

- Strong permeability to effectively remove unguinous waste. Superior disinfecting power
- Good deodorizing effect
- Please dilute 1:300 to 1:500 for use.



CL-4123
Mikro Klene
(4 liters × 4 bottles)

Iodine-based cleansing and disinfecting agent. Please dilute 1:600 to 1:1200 with cold water (below 40°C) for use. For disinfection, it is effective to dilute it by 300 times.

Features of Mikro Klene

- All-purpose disinfectant that can clean and disinfect at the same time.
- Disinfectant power is not reduced even under existence of organic substances since its non-corrosiveness keeps residual effects.
- Proven effectiveness against tuberculocidal, fungicidal, staphylocidal and Pseudomonacidal by A.O.A.C. official testing protocol. (USDA registered number 1677-22)

■ Relationship between dilution rate and effective iodine concentration

Dilution rate (Multiple)	Effective Iodine concentration (ppm)
1,200	12.5
600	25
300	50
200	75
150	100
100	150

■ Test results for disinfectant efficacy

Agents	Dilution ratio (Multiple)	Duration of activity (in minute)			
		2.5	5.0	10.0	15.0
Mikro Quat	10,000	+	+	—	—
	11,000	+	+	—	—
	12,000	+	+	+	—
Mikro Klene	600	+	—	—	—
	650	+	+	—	—
	700	+	+	+	—
Carbolic acid	90	+	+	—	—
	100	+	+	+	—

● Test Method: Followed by Inspection Guideline for Disinfectant provided in Hygiene Inspection Guideline (I) (II)
● Bacterial species: Bacillus typhosus S-57 (Kanagawa Research Laboratory of Public Health)



CL-4121
Lime-A-Way (10kg)



Chlorine-based sodium hypochlorite (NaClO) solution. Please dilute 1:500 for cleansing and disinfecting cages, equipment, and breeding rooms.

CL-4122
Fujilax (20kg)

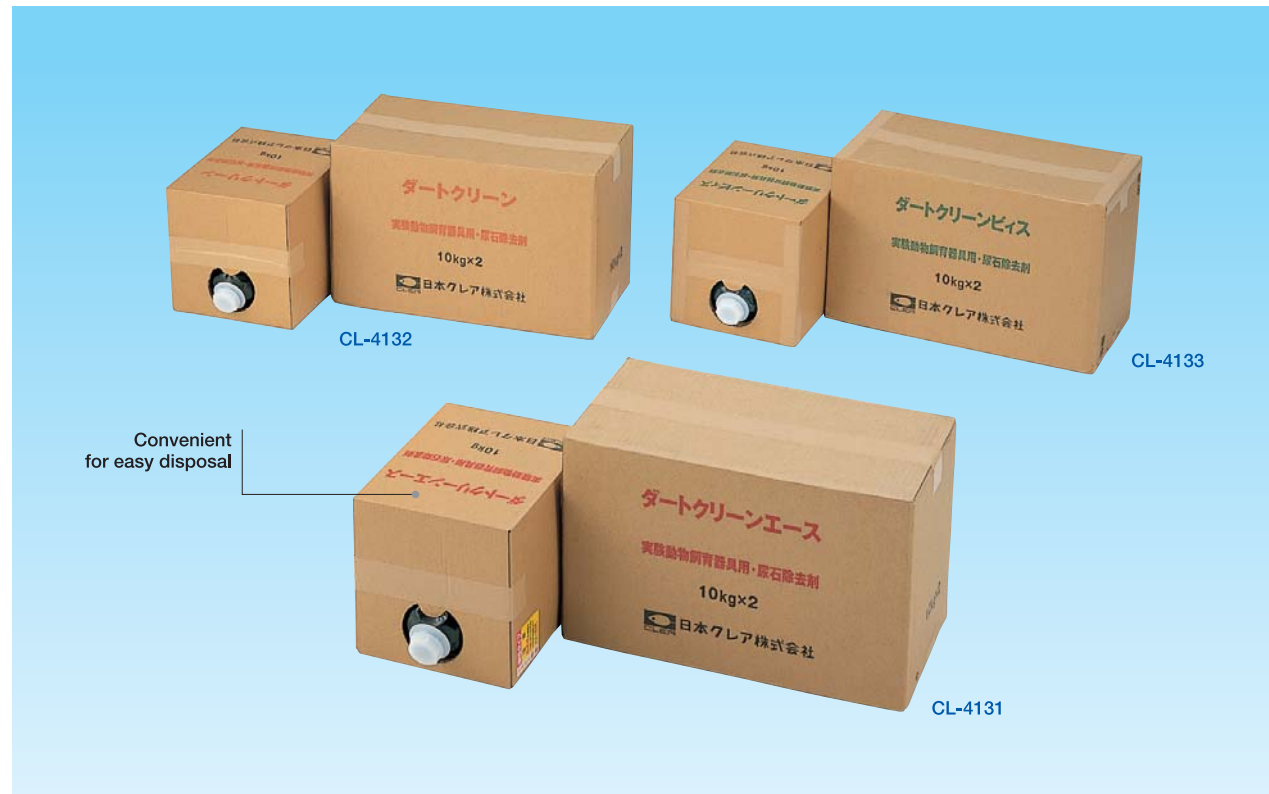
CL-4127
Purelox-S (18ℓ)



CL-4126
TEGOING
Polyethylene container 10kg×2

Compound cleansing disinfectant of ampholytic and nonionic surfactant. Superior disinfectant power without significant metallic corrosion or toxicity. Please dilute 1:100 to 1:600 for use.

CLEANSING AGENTS, DISINFECTANTS



Dirt Clean Series offer excellent detergency on the deposition of urinary calculus, water stain and excretory substance adhesive to the rearing equipment for experimental animals. They are all made from natural ingredients such as organic acids and you can use them with a sense of safety with very little corrosion to the rearing equipment. In addition, they promptly dissolve after drainage and good for preventing water pollution.



CL-4131
Dirt Clean Ace
(Rapid treatment type)
10kg container × 2

CL-4132
Dirt Clean Custom
(Immersion type)
10kg container × 2

CL-4133
Dirt Clean Vis
(Spotcleaning gell type)
10kg container × 2



CL-4211
Laboratory Wear
CLEA Type

This is a special order item with tetronic blended fabric (tetron 65%, cotton 35%). Please specify color, white or light blue.



CL-4290 Face mask (cotton)

CL-4295 Cap (cotton)

CL-4180 White half boots

■ Specifications of CLEA type laboratory wear ※Women's model is also available

Model Number	Size	Coat					Slacks					Suitable height and weight	
		Length	Shoulder Width	Chest girth	Sleeve length	Color	Length	Waist girth	Inside leg length	Inside arm length	Waist (Without zipper)	Height	Weight (kg)
CL-4211-1	LL	79	48	118	60	45	104	99	75	23	93	176	75
CL-4211-2	L	76	46	110	58	44	101	96	72	22	86	173	68
CL-4211-3	M	73	44	105	56	43	98	93	69	22	82	165	60
CL-4211-4	S	70	42	101	54	42	95	90	66	21.5	78	160	52

■ Jumpsuit type laboratory wear (Unisex)

Model Number	Size	Jumpsuit									Suitable height and weight	
		Total Length	Shoulder width	Chest girth	Sleeve length	Waist girth	Inside leg length	Bottom Edge Width	Height	Weight (kg)	Height	Weight (kg)
CL-4271-1	LL	166	49	116	61	98	77	23	176	75	176	75
CL-4271-2	L	161	48	112	59	94	74	22	173	70	173	70
CL-4271-3	M	156	47	108	57	90	71	22	165	60	165	60
CL-4271-4	S	151	46	102	55	86	68	12.5	160	52	160	52
CL-4271-5	SS	146	44	98	52	82	66	21	155	48	155	48

■ Specifications of White half boots

Size	22.5	23.0	24.0	24.5	25.0	25.5	26.0	27.0	28.0
------	------	------	------	------	------	------	------	------	------



CL-4213
Dust-free garment (For men)

CL-4223
Dust-free garment (For women)

M, L, LL (XL), O (XXL) sizes are available
Please ask for caps, masks, gloves, shoes, and shoe covers separately.

Made of antistatic fiber by Toray Co.

Suitable for working when air shower is required.



CL-4291
Disposable masks
(cup style)
50 masks/box

CL-4292
Disposable masks
2,000masks/package(50masks/box×40)

EXPERIMENT,
WEAR,



CL-4811
Vacuum cleaner
for clean rooms
Utility Model 1004035 (Japan)

Vacume cleaner for the exclusive use in the places where high level cleanliness is required. It captures micro particles with three stages of barrier filters and prevents the scattering of bacteria by exhaust air during cleaning.

■ Specifications of a vacuum cleaner for clean rooms

Model	CV-G104C
Body dimensions	W327×D283×H657mm
Power supply	100V50/60Hz
Power consumption	1kW
Suction work rate	320W
Dust removal	Paper dust collector
Dust collection capacity	About 4.5 ℓ
Cord	8m removable type
Weight	9.9kg (Including accessories 11kg)



CL-4801
Wet vacuum cleaner

This is a wet vacuum cleaner that powerfully sucks sewage and detergent bubbles remained after floor washing and quickly drains them.

A wide floor nozzle can suck water efficiently and clean wide space quickly.

Dry waste can be sucked by using a dry filter.

■ Specifications of wet vacuum cleaner

Model	CV-98WH2
Body dimensions	W470×D450×H700mm
Power supply	100V50/60Hz
Power consumption	1kW
Suction work rate	150W
Dust removal	High-speed forced drainage
Dust collection capacity	About 20 ℓ
Cord	12m (With a ground clip for short circuit breaker)
Weight	20kg (Including accessories 21.5kg)